

KPTA NEWSLETTER

Published monthly for the Kentucky Public Transit Association
by Federated Transportation Services of the Bluegrass

NOVEMBER 1991

HAPPY THANKSGIVING

KYTC\KPTA AWARDS COMMEND EXCEPTIONAL WORK

During the closing session of this year's KyTC\KPTA Conference many transit professionals and volunteers from around the state were commended for their exceptional work. The awards ranged from volunteer of the year to rural system of the year. Those individuals and agencies are:

KYTC Awards:

Statewide

- Overall System: Transit Authority of River City (TARC)
- Section 18: Rural Transit Enterprises Coordinated (RTEC)
- Section 16(b)2: American Red Cross WHEELS, Lexington
- Transit Manager: Sue Jeffers, BUS

Regional

- Western Kentucky Grantee: Fulton County Transit
- Central Kentucky Grantee: Community Action Transit System
- Eastern Kentucky Grantee: Daniel Boone Development Council

KPTA Awards:

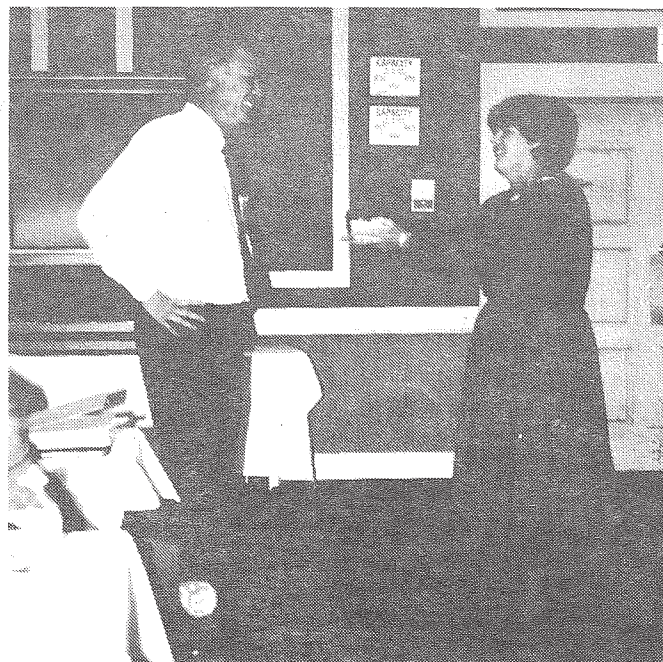
- Volunteers: Sandra Hutchinson, Foothills Express, Richmond
Louis Moseson, ARC WHEELS, Louisville
- Section 9 Driver: Karen Douglas, Owensboro Transit System
- Dispatcher: Janice "Freebird" Vanzant, RTEC
- 16(b)2 Drivers: Susan Coy, ARC WHEELS, Louisville
Gerald Wilson, Mayfield\Graves County SSC

AWARDS

Other than the KyTC and KPTA awards, a special award was given to a KyTC staff person this year. Florence Tandy from the Kentucky River Foothills Development Council honored Dallous Reed with the highly coveted "Basket-O-Tomatoes" award. According to Florence, "no one else in the state deserved it more than Dallous". Dallous was too choked-up to comment.



Dave Arnett (Center) receiving overall system of the year award. Also shown Dallous Reed (left) and Vickie Bourne (right)



Dallous Reed being honored with the "Basket-O-Tomatoes" Award by Florence Tandy.

RTAP COMMITTEE ELECTED

The State's RTAP Committee was elected on October 25 following the conference's "Tap on RTAP" session. Of the five RTAP regions in the state, four re-elected their current representatives, they are:

MIDWEST

Ned Colcord
BRLOO
PO Box 90005
Bowling Green, KY
42102-9005

CENTRAL

Sue Jeffers
BUS
3445 A Versailles Rd.
Frankfort, KY
40601

NORTHEAST

Ray Young
Maysville Transit
216 Bridge Street
Maysville, KY
41056

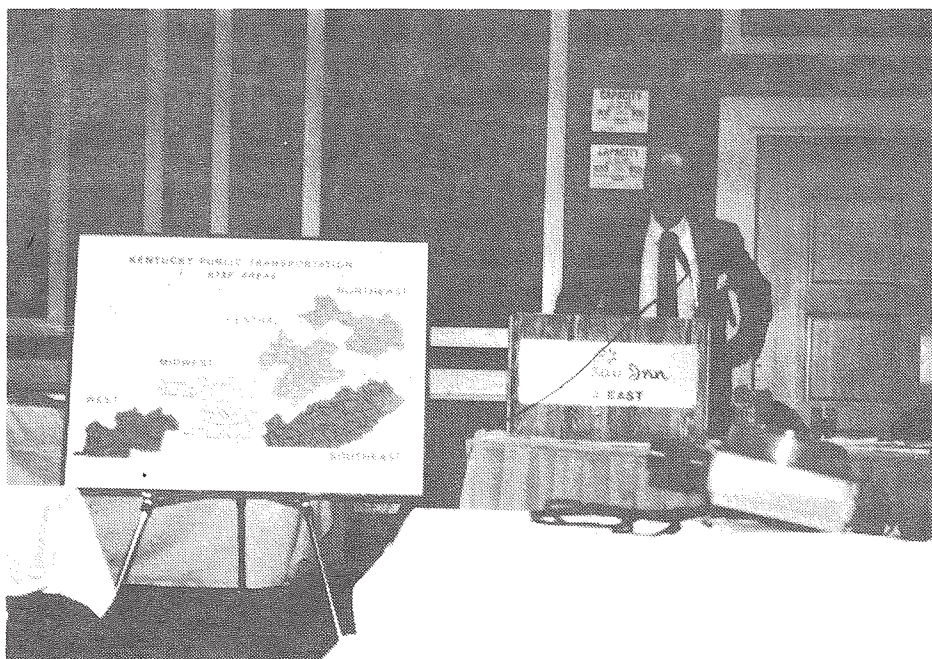
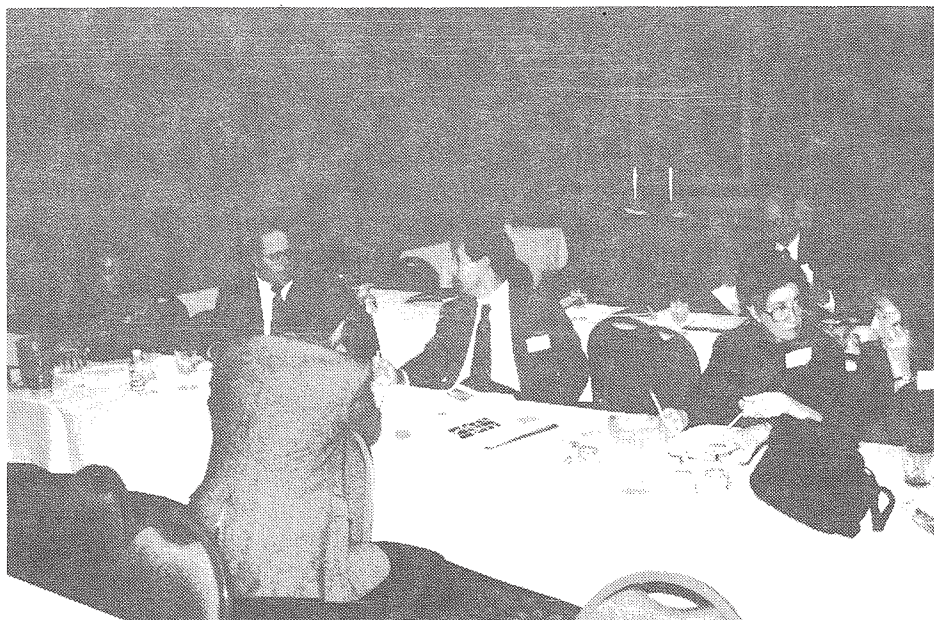
SOUTHEAST

Shirley Cummins
RTEC
PO Box 746
Mt. Vernon, KY
40456

Newly elected this year for the Western Region is:

Mark Davis
Purchase Area Development District
PO Box 588
Mayfield, KY
42066

REGULATORY UPDATE SESSION DISCUSSION

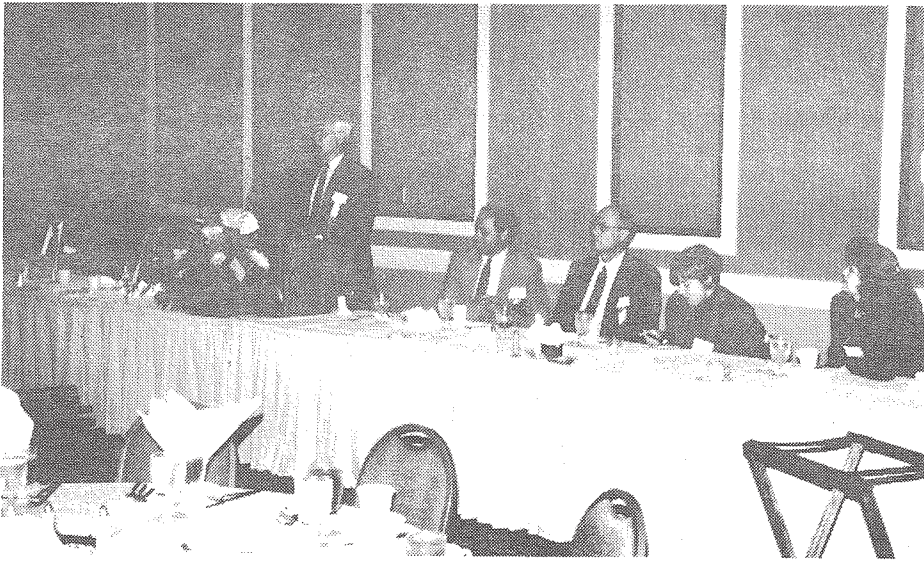


"TAP ON RTAP" SESSION.
Dallous Reed describes the RTAP
program, Kentucky's Regional
Areas and the RTAP Committee
function.

"TAP ON RTAP"
SESSION PANEL.
From left to right:
Shirley Cummins,
RTEC; Ray Young,
Maysville City Transit;
Carol Everett, APWA;
and, Sue Jeffers, BUS.



CONFERENCE SHOTS



THURSDAY EVENING BANQUET PANEL. from left to right: Jerry Ross, KyTC; Don Sullivan, Director of Division I, UMTA; Dave Arnett, TARC; Tony Dittmeier, Transportation Program Specialist, UMTA; Dallous Reed, KyTC; Carol Everett, Director of Special Programs, American Public Works Association; Vickie Bourne, KyTC.



THURSDAY EVENING BANQUET CROWD.



DOT\HHS COORDINATION PANEL DISCUSSION. From left to right: Fran Sample, DSI; Beth Jennings, Dept. for Medicaid Services; Ned Sheehy, FTSB; Jerry Ross, KyTC; Jules DeLambre, CHR; Sharon Perry, DSI.

FROM THE CTAA DELEGATE REPORT

COMMUNITY TRANSPORTATION ASSOCIATION OF AMERICA DRAFT LIST OF POSSIBLE RESEARCH PROJECTS

(1) Coordination of Human Service and Public Transit Resources.

With the work of the Federal DOT/DHHS Coordinating Council ongoing, demonstration projects geared to the sharing of resources such as training, maintenance, and support services would be very appropriate and particularly timely with current planning for the Americans with Disabilities Act regulations.

(2) Cost-Effective Community Bus Models. Again, with transit systems looking toward implementation of ADA, new methods will have to be developed for certifying riders who require paratransit services and for developing hybrid fixed-route, semi-fixed route or route deviation methods to serve as many riders as possible in cost-effective ways.

(3) User-Side and Employer Subsidies. Three demonstrations in rural areas using user-side subsidies provided by human service providers and employers.

(4) Transit for Enhancing Rural Economic Development. Three demonstrations for employment transportation, multi-modal facility development and owner-operated vehicles in the most remote rural areas.

(5) Rural Feeder Services. Demonstrations on feeder services for intercity, rail and Airport services.

(6) Real Time Scheduling. Research and demonstrations for real time scheduling with regard to paratransit (no reservations ahead) in both rural and urban areas.

(7) State Associations. Demonstrations using state associations for statewide data collection, with emphasis on multiple UMTA and DHHS funding sources.

(8) 16 (b) (2): Research on appropriate uses for this resource and how the program could best be used to effect full coordination of UMTA/DHHS funding and complement ADA. Also, how states differ in their project selection criteria and their vehicle purchase procedures.

(9) Rural Transit Facilities: Research on when to contract with the local dealer for maintenance; when to bring it in-house; when is a facility appropriate and what kind. Also a handbook and guidelines (modeled on the existing urban facilities handbook) for constructing appropriate transit facilities.

(11) Develop Minority Training for Rural Areas. Develop training courses for prospective minority transit managers in rural areas.

SECTION 18 AND THE 1990 CENSUS

The Census Bureau has made available its population figures for urbanized and non-urbanized areas. Fiscal '92 formula funds will be distributed on the basis of these new figures. Virtually every state will see some change in its share of total Sec. 18 funding, along with changes in the distribution of funds to the large urbanized areas and to the states for small urbanized areas.

Eighteen states actually lost non-urbanized population between 1980 and 1990. Another eleven states experienced rural growth at less than the national average. All of these will see their share of funds decline. Fortunately, the expected increase in Sec. 18 funds should be enough to assure that no state sees less Sec. 18 dollars in FY '92 than it did last year. The states where the decline is worst are West Virginia, Delaware, North Dakota, Iowa and Illinois.

The 21 states that will see their shares of Sec. 18 funds go up are led by Florida, Texas, California and Georgia (in terms of actual share increase) and by Alaska, Hawaii, Nevada and Arizona.

FY '92 APPROPRIATIONS

Final action on Fiscal 1992 appropriations was completed before reauthorization. The funding levels approved and signed by the President represented a 15 percent increase over FY'91. Included was a 9 percent increase in formula funds. Sec. 16(b) (2) did even better, with a \$20 million increase to \$55 million. Final determination of funding levels for Sec. 18 and for small urbanized areas will depend on the reauthorization bill that becomes law. UMTA is holding off on apportionment of the FY '92 funds.

FROM AROUND THE STATE

Foothills Express Provides 18,000 More Rides In 1990-91

Foothills Express ridership figures for the 1990-1991 fiscal year are in and the total number of rides has risen from 106,000 in 1989 to 122,000 in 1990. This increase results from more passengers being transported to after-school and medical programs. There is also an increase in the general ridership.

Many of the new Foothills riders were participants in children's medical, educational and enrichment services provided by comprehensive care and the cities of Richmond and Irvine. Foothills Express transportation gives students the opportunity to participate in these programs by providing transportation from area public and private schools to program sites.

In the last fiscal year Foothills Express also provided more general public transportation. For the community this meant more trips to the doctor, the grocery and to visit family. The increases over previous ridership are significant. Gary Garrison, Transportation Manager, is still seeking improvement. "Next year we want to continue to expand our public transportation services to the general public. This increase will come with an expected 25% increased in subsidized taxi service, as well as more Foothills Express contract services."

TANK ADDS NEW EMPLOYEE ORIENTATION TOOL

The Transit Authority of Northern Kentucky (TANK) recently decided that another important step must be included in the orientation of new public transit employees. Tank has added an audiovisual presentation to their orientation program. This 10-12 minute slide show reviews all of the aspects of public transit as they pertain specifically to TANK. It is important that new employees understand the organizational structure and the financial structure of public transit.

All employees are representatives of the system. Therefore, it is most appropriate that they be able to respond knowingly to questions asked by inquiring citizens. Knowledgeable employees can be a very positive public relations asset to a transit system. The knowledge provided in this orientation program should contribute to positive employee relations and morale. This should help increase the Transit Authority's image.

* * *

TANK held its 1991 SAFETY ROADEO in August on a large parking lot at Northern Kentucky University. With help from members of several area law enforcement agencies, numerous TANK staff of all levels, family members of TANK employees, and of course the performance of the operators and mechanics, the event was quite a success.

Members of the media were invited to drive a vehicle through the Roadeo course. Several media representatives responded eagerly to the offer trying their hand at maneuvering their way through the various "obstacles". This provides quite a unique perspective for reporters, and makes them very aware of the skills necessary to operate TANK's coaches. It also gives direct evidence of TANK's willingness to help the media in their efforts.

RIVER CITY CURB-CUT CONTEST

There are at least 1,867 locations throughout the community that needs curb cuts, according to Larry J. West.

West, an employee of Capital Holding Corp., is the winner of the Locate a Curb Cut Day Contest sponsored by TARC and several other local organizations.

West was honored as the contest winner at a reception on Thursday, August 29 at 10:00 a.m. in the TARC Board Room, 1000 West Broadway. He received two airline tickets to anywhere in the continental United States, courtesy of Thoroughbred Travel, Inc.

West not only submitted the largest number of potential curb cut locations, but he also pinpointed the spots on a coded map. He found the locations by taking walks during his lunch hour, looking out the bus windows during his commute to and from work, and taking walks while he waited to transfer from one bus route to another.

The second place winner was Ken Duncan, who submitted 285 locations. He received five coupons for free dinners at Kunz's Restaurant. Third prize, a \$20 gift certificate to Ferd Grisanti's Restaurant, went to Quimiller P. Marshall with 105 locations.

Other companies that donated prizes are the Terrace, the Galt House, Moby Dick, Shoney's, Tumbleweed, the Louisville Redbirds, D & W Silks, and Smith's Furniture. The Batchelder Company donated advertising space both inside and outside TARC buses.

Drug and Alcohol Testing Given Go-Ahead in Appropriations Bill

According to the November 11 edition of *Passenger Transport* the transit industry received a \$500 million boost in federal aid over 1991, when President Bush signed the Fiscal Year 1992 transportation appropriations bill in Oct. 21. But along with 15.2 percent increase, the Department of Transportation and Related Agencies Appropriations Act of 1992 also includes a drug and alcohol testing provision.

The bill gives the U.S. DOT statutory authority to require transit systems receiving federal assistance to conduct the testing of employees in safety-sensitive jobs for use of drugs and alcohol. The provision includes four types of testing - pre-employment, reasonable suspicion, random, and post-accident - of safety-sensitive employees of mass transit systems.

DOT has up to one year from when the bill was signed to issue regulations concerning the testing. An UMTA spokes-person said the department will have a Notice of Proposed Rulemaking regarding the drug provisions available by January. The final rules will be completed next summer.

One of the more significant aspects of the drug testing provision is that it overrides any conflicting state law. Included in the current drug testing language are provisions which allow UMTA to promulgate regulations regarding the suspension or dismissal of employees who are determined to have used or have been impaired by alcohol while on duty, or to have used a controlled substance, whether on duty or not on duty, unless they are permitted for medical purposes.

The law requires UMTA to produce regulations on the rehabilitation of employees who test positive for drug and alcohol use. The bill does not require that transit systems pay for such rehabilitation programs.

The testing will be conducted according to Department of Health and Human Services guidelines to ensure the accuracy of tests and to protect employee rights.

HOW TO APPROACH OPINION LEADERS

Opinion leaders are key audiences in many public relations programs. However, often they are not approached correctly in efforts to garner support.

When you approach opinion leaders by simply stating your case, you force them to evaluate your plea. They may not side with you.

A better way is to approach them by saying that you recognize they're in the community and that others often seek them out for advice and information. With that role, they should be aware of your important issue. Then give them your information from this viewpoint.

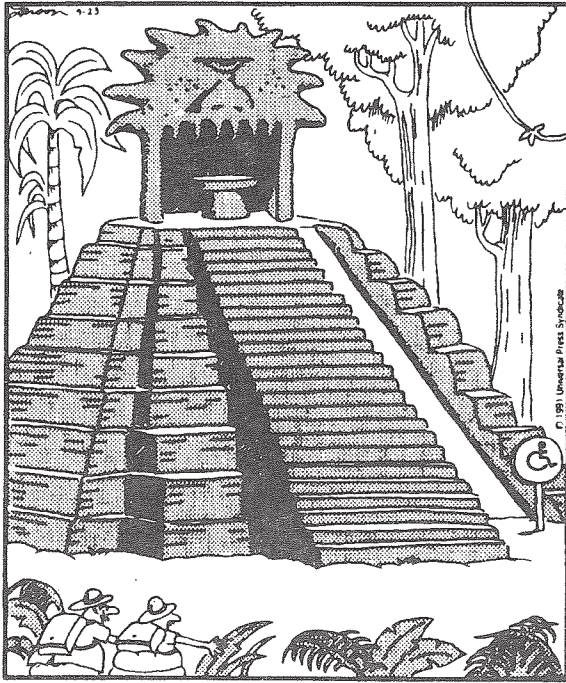
* * * * *

Write to us and let us know what your system is doing for the holidays. JCSB, PO Box 11610, Lexington, Kentucky 40576

JOBS PROGRAM TRANSPORTATION CHANGE

For all systems now transporting JOBS participants, effective December 1, 1991 transportation payments will be made "prospectively". Currently JOBS participants are reimbursed for the number of days they attend learning or training sessions. There will be no change in the daily allowance of \$3.00 per day.

THE FAR SIDE by Gary Larson



Aug 11, 1959: In the heart of the Bolivian jungle, archaeologists discover an ancient and heretofore unknown sacrificial altar.

SOURCE: SEPT. 23 EDITION LEXINGTON-HERALD LEADER

SOURCE: OMNI MAGAZINE \ DATE UNKNOWN



WHAT DO YOU THINK?

If you have any comments or suggestions about the KPTA Newsletter, please call or write FTSB, Inc. at (606)-233-0066 or PO Box 11610, Lexington, Kentucky 40576 respectively.