

Empower Kentucky Expands Seven New Regions Awarded

The Human Service Transportation Delivery Process began transporting recipients of KTAP, Medicaid, Vocational Rehabilitation, and Department for the Blind (DOB) in Region 14 (Sandy Valley Transportation Services) on June 1, 1998. Although there have been problems, on the whole the system seems to be working. There have been drivers who had positive results when drug and alcohol tested.

On September 1, 1998, Region 16 (Licking Valley CAP) began providing transportation to KTAP, Voc Rehab, DOB beneficiaries. Beginning October 1, Region 8 (Bluegrass CAA) and Region 12 (R-Tec) began providing service for these same programs. Regions 10 (Federated Transportation Services of the Bluegrass) and 11 (Kentucky River Foothills) began these same Programs November 1.

Region 13 (LKLP) began November 1 but they also began Medicaid in eight (8) of their eleven (11) counties.

Regions 14 and 13 began Medicaid because they are operating under an extension of the Sole Source Waiver. The Sole Source Waiver had to be extended because the new Transportation Waiver had not been approved at the Federal level. The Medicaid Waiver has received Federal approval. Please call your Multimodal Project Manager for your region start up date.

Regions 2, 3, 6, and 9 have been awarded respectfully to Pennyriale Allied Community Services, Inc., Audubon Area Community Service, Inc. (GRITS), Yellow Cab Company of Louisville, and Yellow Cab Company of Newport, Inc. Regions 1, 4, 5, 7 and 15 are up for advertisement.

Cummins Awarded National Certification

Shirley L. Cummins, Chief Executive Officer/Executive Director, Rural Transit Enterprises Coordinated, Inc. (RTEC), Mt. Vernon, was designated as a Certified Community Transit Manager (CCTM) by the Community Transportation Association of America (CTAA).

The Certified Community Transit Manager Program recognizes community transit managers for specific skills they have acquired through experience, education and professional development and a

passing score on the certification exam. Cummins, through her years of service has demonstrated proficiency in human resources, finance, operations, and development of transit programs.

Two years in the making, this program is the first of its kind in the community transit industry. The program marks a giant step forward in the professionalism of community transit.

Community transportation is an essential public service without

which millions of Americans would be shut

Continued on Page 7



Members of the CTAA exam class from front row (left to right): Lisa Blake, PA, Lisa Ann Flynn, PA, Shirley Cummins, KY, Harry Johnson, PA. Back row: Teresa Ward, WV, Ross J. Daughtery, PA, Patrick Smith, PA, Ream Lazaro, Instructor, Chris Ward, VA, and Patrick McKinney, WV.

FTSB New Address

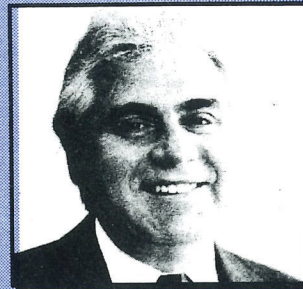
Send Newsletter Information To:

**694 New Circle Rd. NE, Suite #33, Lexington, KY 40505
606/233-1668 (FAX)**

From The Desk of The President

Dear KPTA Members:

The Transportation Equity Act for the 21st Century (TEA 21) is out and full of promise. TEA 21 presents us with opportunities to be creative and respond to the needs of our customers and communities. The funding levels are higher than ever before with donor states like Kentucky getting more reasonable return on the tax funds sent to Washington.



TEA 21, coupled with Empower Kentucky and the changes initiated in the last Kentucky Assembly, give us the flexibility and capability to do the job.

The Federal Transit Administration is proceeding more quickly than ever before to get the guidance and ultimately the funds out to where they can be utilized.

Specific programs include:

Job Access and Reverse Commute Grants. Funding is available to both metropolitan and rural areas for the express purpose of connecting people to Jobs.

Clean Fuels. Funds will be available on a formula basis to areas in non-attainment with air quality standards. The formula will be based on the level of attainment, level of service and population. Unlike other formula programs, the grant recipient must express an interest. The funding is to support the use of alternate fuels including clean diesel technology.

Americans with Disabilities Act Service. Up to 10% of formula allocated funds can be used to provide services required under ADA. This provision does not provide additional funds but allows additional flexibility in the use of formula funds.

Transit Pass. An employer can now allow an employee to purchase transit benefits with pre-tax dollars. The employer will also be able to offer increased levels of transit benefits to employees as a tax-free benefit.

The provisions above are more complex (naturally) than can be detailed here. There are also other provisions which can be useful. The U.S. Department of Transportation, the American Public Transit Association, the Community Transportation Association of America, and the Surface Transportation Policy Project have all issued guides to TEA 21. When all else fails, you can read the Federal Register.

The bottom line — get acquainted with TEA 21 and use its provisions. It is a remarkable piece of legislation which builds on the Intermodal Surface Transportation Act (ISTEA). KPTA has been pursuing several initiatives with the Kentucky Transportation Cabinet. Want to get involved?

J. Barry Barker, KPTA President
Executive Director
Transit Authority of River City (TARC)

Z-Bus Raises \$3000 for Big Brothers and Big Sisters

Lexington-LexTran, Z 103, Screen Printing and Big Brothers Big Sisters of the Bluegrass were all winners as "Freak Daddy" lived on a LexTran Bus for a good cause. The cause Big Brothers Big Sisters of the Bluegrass took home over \$3100 to help match single parent children with caring role models. Another 1000+ dollars was pledged by UK and ECU Greeks in the "Greek Challenge" Additionally, Big Brothers Big Sister had an excellent kick off for their fall recruitment efforts. There are 172 boys waiting to be matched and Z 103 was trying to help find those Big Brothers for the organization by giving away a UK football signed by Coach Hal Mumme to the lucky

person drawn from among those agreeing to become a "big" and attend the Big Brothers Big Sisters Campus Orientation on Tuesday September 15th.

The community rallied together for the cause including many area business, and Greek organizations from both Eastern Kentucky University and the University of Kentucky. UK gave through the ECU/UK "Greek Challenge" and also contributed all the proceeds from their annual Watermelon Blast to Big Brothers Big Sisters. Among business' making donations, "What's a Futon" donated a Futon for Freak Daddy to sleep on as he stayed on the bus and also donated 10% of their Futon sales (\$500) for the week. J&H Army Navy Store donated a sleeping bag and Slone's Signature Markets came through with a \$1000 check. The Gremlin Gift Shop in the Radison Plaza Hotel donated several Beanie Babies which were subsequently given away to those making substantial donations to the cause. Even the Lexington Children's Museum joined the fun by donating free entrance to the Museum for Big Brothers and Big Sisters participants. And the Z-Bus helped the UK Blood Drive stopping in on it while they were out and about.

The promotion ran during LexTran's service hours (5:30 a.m. until 1:00 a.m.) to promote LexTran's new night service. Freak Daddy did his morning show on the bus every morning from area breakfast locations Perkins, Shoneys, Dennys and the Waffle House. One morning they even joined area early morning exercisers at World Gym. Additionally, lunch broadcast were made from Arbys, Max & Irma's Cooker,In the evenings the Z-Bus



LexTran participated in a benefit for Big Brothers and Big Sisters of Lexington. The promotion was "Ride Z-BUS".

traveled to Fayette Place, Lexington Mall, Turfland Mall, Millpond Centre and Hamburg Pavilion all in the name of donations and recruits for Big Brothers Big Sisters. Everywhere the bus went local merchants offered specials for anyone who would agree to make a donation.

All around the promotion was a success for all involved and a great opportunity for our entire community to join in fun and at the same time help the children of our community.

How do you top a National award-winning LexTran advertising campaign

You take a great cause, Big Brother/Big Sisters of the Bluegrass (BBBS); mix it with an adventurous client (LexTran); add an innovative advertising agency (AD-SUCCESS); throw in The New Music Revolution Z 103; and top it off with a man willing to change his life for one week to live on a bus!

The result: LexTran surpassed its fund-raising goals, while at the same time, heightened awareness of its new, expanded services for the college market.

In order to target the college market for LexTran, AD-SUCCESS arranged for Freakdaddy, the morning show DJ at WXZZ, Z 103, to make his home on a LexTran bus from September 7-September 12 to raise money and awareness for BBBS. The promotion also educated the college market about LexTran's new night service, bike racks, and college Getaround Passes.

All four network television stations got on "Z-Bus" to do live broadcasts and special feature stories; Kruser (WLEX TV personality) even took "Z-Bus" out to pick up passengers! The Greek students from both UK and ECU got into the pre-football game spirit, each group vying for the title "Best Greeks of the Bluegrass"



Jenny Williams, LexTran Marketing Director, prepared for the "Z-BUS" promotion.

through this fund-raising competition. The financial goal for BBB was easily surpassed, and at press time, Freakdaddy was still counting money!

When fellow employees look at Scottie Walker, they see Ability, not disability

Scottie Walker rides the Paducah Area Transit System's medical van to his job at the PATS office each morning. He knows how much patients depend on its services.

So it's no surprise that Walker, 20, takes his job seriously as a dispatcher for PATS, working a two-hour morning shift weekdays and 9 a.m. to 3 p.m. Saturdays. Walker moves around in his wheelchair to answer phones and give directions to drivers.

"He may not be able to move around much, but his mouth works great," said Wilma Walker, his mother.

Scottie Walker, in a wheelchair since childhood, started therapy at Easter Seals West Kentucky when he was 11 months old, attended the special education programs at Forest Hills School and Lone Oak Middle School, and graduated with honors from Heath High School last May.

Walker is an example of a slowly emerging sector in Paducah workplaces. For many years, some employers were unwilling to take a chance on hiring disabled workers. But one Paducah social worker who counsels disabled teenagers says the attitudes are too slow in changing, and she stresses the message during National Disability Employment Awareness Month.

"The attitudes are the real disability," said Michelle Sither, adviser to the disabled Teen Support Group and a social worker for the Kentucky Commission for Children with Special Health Care Needs. "When people don't see beyond the wheelchair, they're not going to give them a chance. A lot of kids with disabilities are just stereotyped. A lot of the kids may do things slower, but they really have a lot to contribute."

Walker is an example. His limited mobility, caused by spastic cerebral palsy, has never stood in his way. He was involved in various clubs at Heath and was determined to go to work upon graduation. At PATS, he is able to talk clearly with those who call needing help. A Gateway 2000 computer, provided by the Kentucky Department of Vocational-Rehabilitation, will enable Walker to document calls he receives. He has limited use of his hands.

"You've got to have employers who are willing to work with people who have disabilities and have accommodations, if any. "A lot of times, the average

accommodations is about \$40 tops. It does take the employers taking the initiative to get past those stereotype barriers of seeing beyond the disability."

Gary Kitchen, manager of PATS, praised Walker's ability. "When he answers the phone, he uses one finger," Kitchen said. "It's just an inspiration to have him here."

"We had to do some adaptive things to help him out. It wasn't that big of a deal to adapt. He has limited mobilities, but he can really do the job. We see him as a person, not a handicapped individual."

Easter Seals West Kentucky began its Employment Connections program in 1994, placing 15 to 20 disabled people into the workplace. Now, the center averages placement of 50 to 60 a year, said Lisa Carrico, the program's manager.

Last year, McCracken County School placed 11 of 12 graduating students who are disabled into jobs. Bonnie Theill, job coach, said she has had all positive experiences with employers.

"Sometimes (employers) are a little apprehensive", Thiell said, "but they're willing to give it a try. We stress that employers give us an opportunity to show off our students' abilities and not their inability to work."

Carrico uses persistency to get her message across to employers.

Nationally, three in 10 disabled adults are employed full-or part-time, according to the 1998 National Organization on Disabilities/Harris Survey of Americans with Disabilities. Of adults who are not disabled, eight in 10 are working full-or part-time. The survey also said, "Working age adults with disabilities are no more likely to be employed today than they were a decade ago, even though almost three out of four who are not working say that they would prefer to be working."

Theill finds out about a student's interest and begins contacting potential employers. "Our ultimate goal is to see the students succeed in what they are interested in," she said. "I would like to see each and every special education student employed. Some can work a full 40-hour week. The employers are going to find out that the students will be loyal, dedicated and eager to learn."

"So many times, there is that attitude that you'll need to stay at home and someone will take care of you," Sither said. "A big trend is to get people not thinking about staying on Social Security Insurance or disability for the rest of their lives."

Theill said by working with the students on job training and skills while they are in high school, the barriers that once existed are being broken. She said parents of disabled children have told her that jobs would have been unobtainable 20 years ago.

Continued on Page 7

KyTC Contracts with UK Transportation Center

Questionnaires Arriving Soon Please Complete

KyTC has contracted with the University of Kentucky's Transportation Center to perform an economic

study on the "Role of Community Transportation in Kentucky's Economy." The graduate students from UK are doing this study as a research project for their class.



Students from UK who are preparing the Transportation Economic Development Study.

Several students from the graduate program will perform different functions of the study. One group will do a System Overview. This will include data on the providers characteristics including: budget/sources of funding, number and type of vehicles, number and breakdown of employees, operating area, services offered and vehicle and passenger miles traveled.

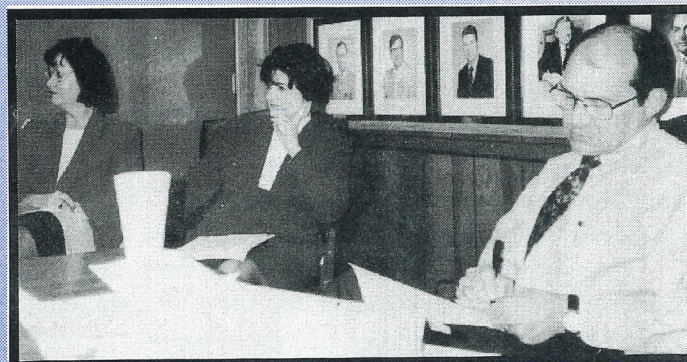
The second group is dealing with how does Public Transportation impact the economy and businesses. This will include outside investment verses local economic benefits, businesses related directly to transportation in Kentucky and businesses related indirectly to transportation in Kentucky.

The third group is showing the benefits to existing and potential ridership. This will focus on readership issues. Specifically, explore how riders benefit from

public transportation by collecting data and information needed to answer the following questions: 1) Who are the current riders, 2) Why, where, and when do they ride, 3) Does public transit improve the quality of the riders' lives, 4) To what extent do rural and urban riders differ and 5) What might the future hold in regard to new riders? This study will focus on current riders, as well as potential users, including the welfare-to-work program participants.

The fourth group's project is the contributions to the community. This will focus on the benefits public transportation provides to the quality of life of individuals and communities. This will include four areas of study: 1) Healthy and Safe Living Space, 2) Substantiality and Livability, 3) Mobility/Access/Quality of Life, and 4) Community Infrastructure.

Each Provider will be receiving a questionnaire to answer. Please complete the questionnaire in a timely manner and submit it back to the Kentucky Transportation Center. This information is pertinent to the success of the Transportation Economic Development Study.



Gail Mayeux, Vickie Bourne, and John Carr with KyTC listen to a presentation from UK students about the Transportation Economic Development Study that is being preparing for KyTC.

Bardstown Road Trolley Hop to Run Every Saturday through Dec. 19

TARC began on October 3, and continuing for 12 consecutive Saturdays through December 19, the clanging bells of TARC Trolleys will be heard along Bardstown Road as local residents and out-of-town visitors visit restaurants, art galleries, and unique shops found along Louisville's most eclectic corridor.

The trolley route begins at Lexington Rd. and Baxter (across from the Brewery), and continues to Taylorsville Road and Kaelin. Service along Barret will also be provided between Highland and Winter. The Bardstown Road Trolley Hop will run from 12:30-8:45 p.m. Trolleys will come by every 20 minutes.

Trolley drivers will sell a \$2.00 all-day pass good for unlimited Trolley Hop rides, or customers can purchase a single ride for \$1.00; 1/2 price fares will be available for students, senior citizens, and people with disabilities with TARC I.D. card.

The Trolley Hop is funded in part by Louisville Gas & Electric Company and the Highland Commerce Guild representing dozens of businesses and attractions along the route. "This unique partnership shows that many diverse interests are committed to enhancing the quality of life in Louisville. The Trolley Hop will facilitate increased economic activity in a fun way that doesn't add to air pollution or traffic congestion," says TARC Executive Director, J. Barry Barker.

TARC Looks to Rapid Transit Options

TARC's Board approves to pursue rapid transit

The Transit Authority of River City Board of Directors, acting on the recommendations of the citizen-based "Transportation Tomorrow" Advisory Work Group and Policy Committee, decided that greater Louisville should pursue electrified light rail or bus rapid transit.

The vote for the system comes at the end of a 15-month, \$1.5 million study to review long-range transportation options for the greater Louisville area.

The proposed light rail or bus rapid transit line would connect downtown Louisville and its medical center with the Smoketown and Shelby Park neighborhoods, University of Louisville Student Center and Papa John's Stadium, either Kentucky Fair and Exposition Center or the Southern Heights neighborhood, Louisville International Airport, United Parcel Service sorting hub, and a Ford auto assembly plant. Over 41 percent of the region's jobs are located in this corridor, as are 10 of the region's top 20 attractions and over \$2 billion in new development.

"Louisville residents are excited about using rapid transit to fight traffic, clean the air, and attract economic development," said Mary Lou Northern, TARC's board chairman. "We have a lot of work to do, but the community is clearly committed to moving ahead."

Transportation options studied by the group included more bus service, roadway improvements, special lanes for buses and carpools, electrified light rail and/or bus rapid transit, or maintaining existing bus service. Each option was analyzed for costs, ridership, economic development, air quality impact, community support, and a number of other measures.

Before the board voted on the proposal, TARC held more than 300 meetings and presentations to gain community input, including a citizens' summit attended by over 100 citizens. Two public opinion surveys were also conducted to gain representative feedback from the community.

Based on public input and technical findings, TARC dropped consideration of building additional highway lanes on I-65 between downtown Louisville and the Kentucky Fair and Exposition Center; commuter rail using existing tracks; automated guideway trains such as monorail; and new, untested technologies.

TARC will now submit the plan to the Kentuckiana Regional Planning and Development Agency, so it can be incorporated into the region's 20-year transportation plan.

The system will then start working with public and private partners to design station sites, proceed with engineering, and identify ways to pay for the proposed \$325 million to \$475 million project.

LexTran After Dark

Lexington Mayor Pam Miller along with LexTran officials have announced that LexTran will have full one hour interval night service on all LexTran routes. This service began August 17th. The new night service will provide bus service from 5:30 a.m. until 1:00 a.m. with service at every bus stop at one hour intervals and bus service during peak driving times one-half hour apart. The service has been made possible through a combination of additional local funding from the Lexington-Fayette Urban County Government and creative use of Federal Government capital funding.

The decision to expand LexTran's night service hours and routes was made in consideration of excellent ridership figures for LexTran for the second year in a row. Last fiscal year LexTran sustained a 30% ridership increase and for this fiscal year ending June 30, 1998 LexTran has shown an additional 13% ridership increase. These increases along with important transportation considerations of "Welfare-to-Work" pointed to a need for the service expansion.

Additionally, LexTran announced the completion of their bus rehabilitation project, the arrival of new bus bike racks which will be installed on the front of all LexTran buses, and the delivery of LexTran's new Nova buses. All LexTran in-service buses are now fully wheelchair accessible meeting the standards of the Americans with Disabilities Act.

KPTA MEETING

November 24, 1998 -- 12 noon
Sweet Potatoes Restaurant, Versailles
Call Sue Jeffers 1-502-695-4290 ext. 214
for Reservations. (This is a must)

DRUG AND ALCOHOL MEETING
Sweet Potatoes Restaurant, Versailles
November 24, 1998 -- 10:30 a.m.

Barren River Local Officials Receive Two 15 Passenger Vans

Through the FY '98 Section 5310 Grant, the BRLOO brokered two 15-passenger center-aisle Dodge vans for Community Action of Southern Kentucky in Bowling Green, KY.

The vans were purchased from R.D. Ward in Milton, Florida and were delivered on June 26. David Morris was able to provide these vehicles at a competitive price even though they were delivered from Florida.

David and his assistant, Deanna Ricker, were super individuals to work with through the entire process.

The BRLOO suggests that if you do not have this vendor on your list that you do so before your next

bid process. Their address is R.D. Ward, 8736 Highway 87 North, Milton, Florida, 32570. Telephone: (850) 983-9501, FAX: (850) 983-9504.

Ability not.

Continued from Page 4

Walker said he never thought of not working. He had told his family as he grew up that he wanted to work. "Why sit still for one day," he said. "I'm the type of person that I just have to have something to do."

He offers this advice for others: "They can achieve it as well as I can. They just need to find something they're good at."

Taken from the Paducah Sun, By Leigh Landini

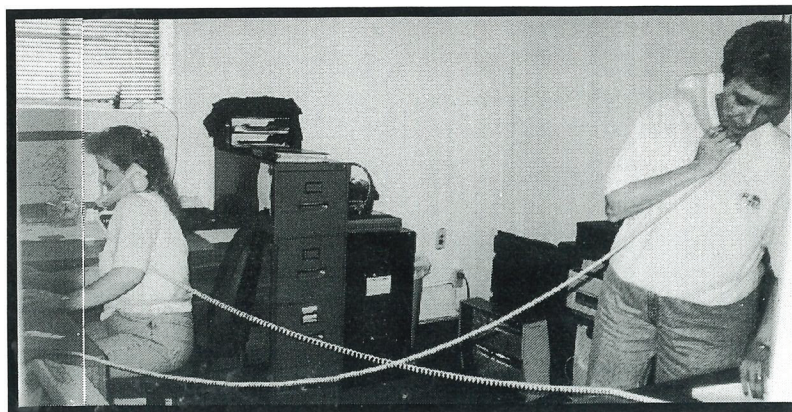
Cummins Awarded

Continued from Page 1

off from the mainstream of community life. Certified Community Transit Managers play a vital role in making transportation more accessible, affordable and available.

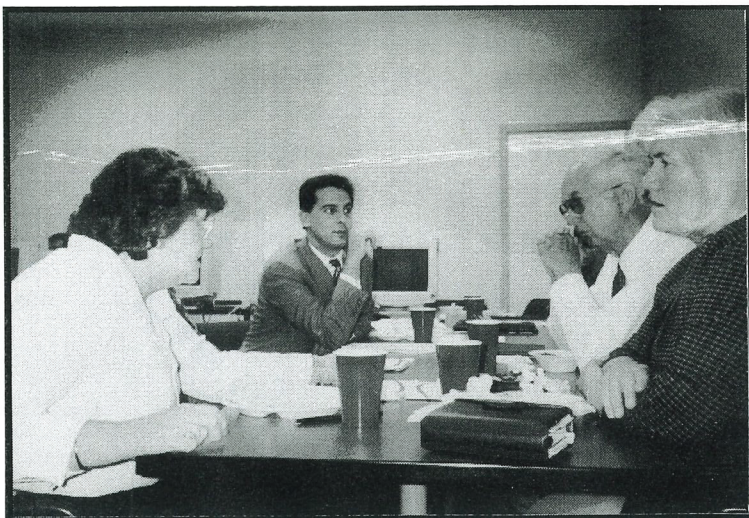
CTAA is a national, professional membership association of more than 1100 organizations and individuals committed to removing barriers to isolation and to improving mobility for all people, headquartered in Washington, D. C.

For more information. Call Chris Zeilinger (202) 661-0217



COORDINATION EFFORTS

This is true coordination efforts at Rural Transit Enterprise Coordinated (RTEC). Pictured from left to right Janice Vanzant and Linda Proctor.



Sue Jeffers (BUS), Dean Richardson (Trapeze), Buddy Fuqua (GRITS), and Twana Johnson (Pennyrile) listened to a presentation from Trapeze on their dispatching software at BUS.

Thought for the Day

*A bend in the road,
is not the end
of the road...
unless
you fail to
make the turn.*

The KPTA newsletter is published for the Kentucky Public Transit Association by Federated Transportation Services of the Bluegrass with the financial support of the Kentucky Transportation Cabinet's Division of Multimodal Programs and Rural Transit Assistance Program. Any comments or suggestions should be addressed to Pam Shepherd, FTSB, 694 New Circle Rd., NE, Suite 33, Lexington, KY 40505.



Federated Transportation Services of the Bluegrass
694 New Circle Rd., NE, Suite 33
Lexington, KY 40505

